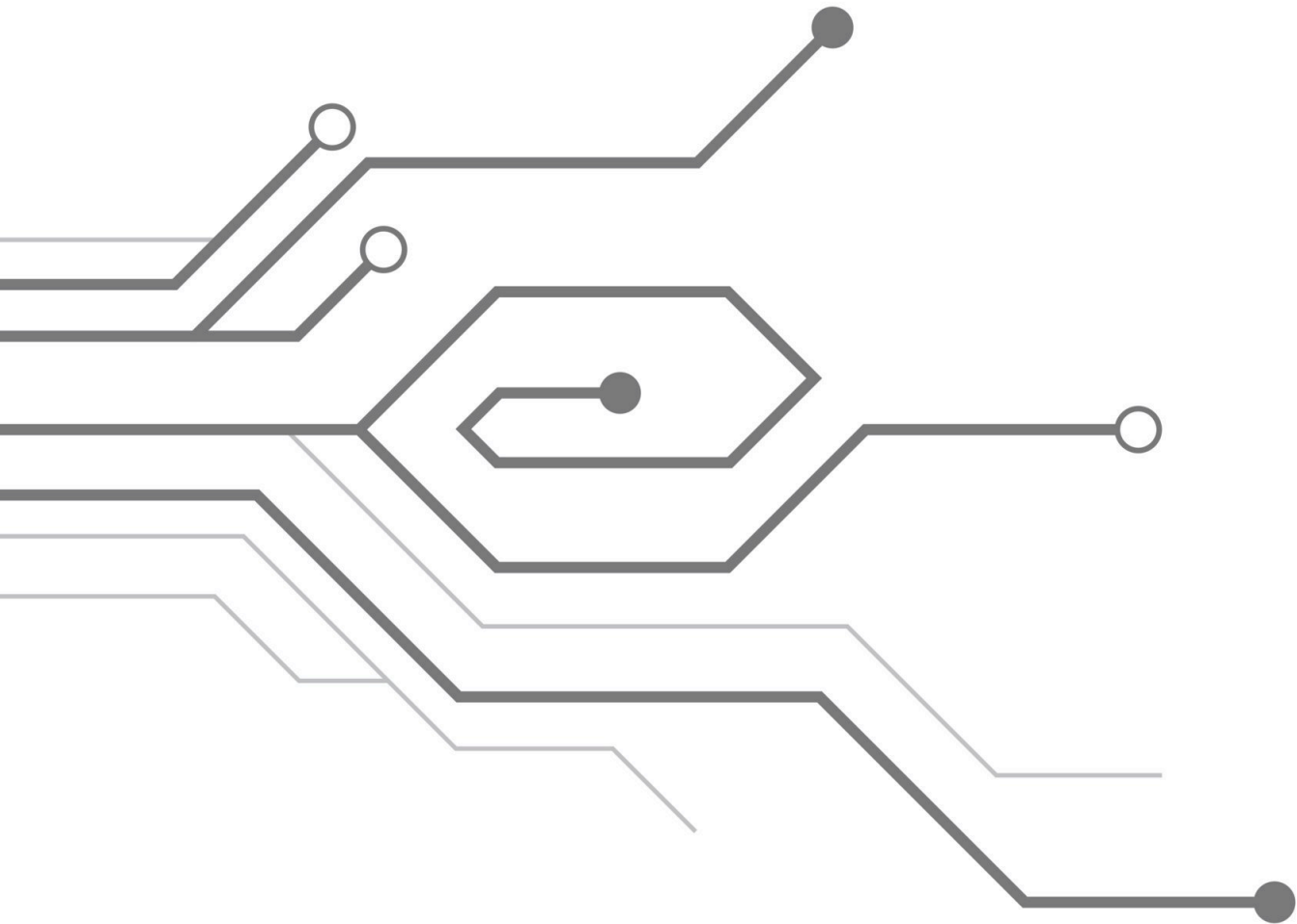



# IoTrope

An Intelligent IIoT Solutions Empowering Industrial Efficiency



The Pulse of Smart Innovation

# Welcome To IoTrope



Experience the future of energy management with IoTrope, your gateway to smarter, sustainable, and efficient industrial operations.

Harnessing the power of IIoT (Industrial Internet of Things), IoTrope connects your machinery and systems to a seamless digital network. Monitor, analyze, and optimize energy usage in real-time, reducing costs and driving innovation.

Join us in transforming industrial energy management—flow smarter, flow better with **IoTrope** !

# About Us

At **IoTrope**, we are at the forefront of Industry 4.0, pioneering advanced energy management solutions designed to empower industrial automation. Our mission is to revolutionize how businesses manage and optimize energy by delivering innovative, data-driven technologies that enhance operational efficiency and sustainability.

We specialize in a comprehensive approach that integrates hardware design, firmware development, and cloud storage. Our solutions are tailored to meet the unique demands of industrial environments, ensuring seamless integration and reliable performance.

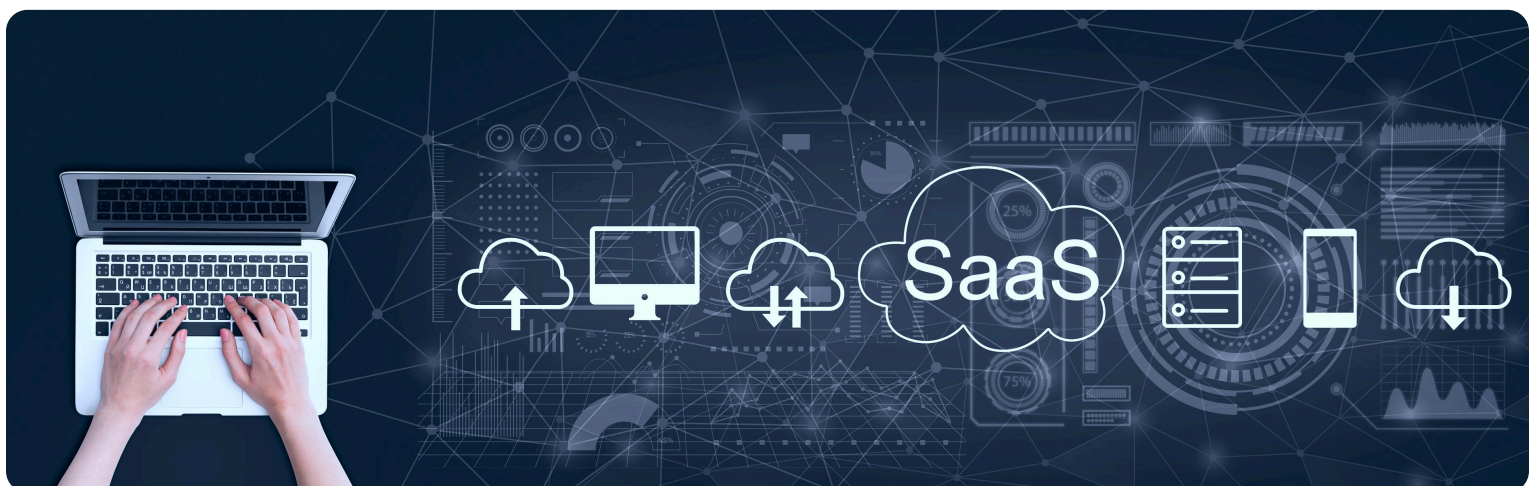
Central to our offerings is **IoTrope** Insights, a cutting-edge cloud-based platform that captures, processes, and analyzes energy consumption data. By transforming raw data into actionable insights, we enable businesses to:

- Track and record detailed energy consumption patterns.
- Visualize data through intuitive dashboards and analytical tools.
- Detect potential weaknesses and quality issues early, ensuring optimal performance.

Leveraging the power of IIoT (Industrial Internet of Things), our solutions provide real-time monitoring and control, empowering businesses to adopt sustainable practices and achieve significant energy savings.

Our strength lies in our strong relationships with customers and beta testers. Their feedback and trust drive our commitment to delivering reliable, credible, and industry-leading solutions. With **IoTrope**, you're partnering with a trusted leader dedicated to driving innovation and excellence in energy management.

Transform your energy management journey with **IoTrope**.



## Our Mission

To revolutionize energy management in industrial automation by delivering innovative, data-driven solutions that optimize energy usage, enhance operational efficiency, and foster sustainable practices through the integration of cutting-edge technologies like IIoT

## Our Vision

To establish ourselves as a global leader in energy management by delivering intelligent, cutting-edge solutions that revolutionize industrial operations. We aim to empower industries worldwide with tools that drive sustainable growth, foster innovation, and ensure unparalleled operational excellence for a smarter and greener future

---



# Overview IoTrope Dashboard

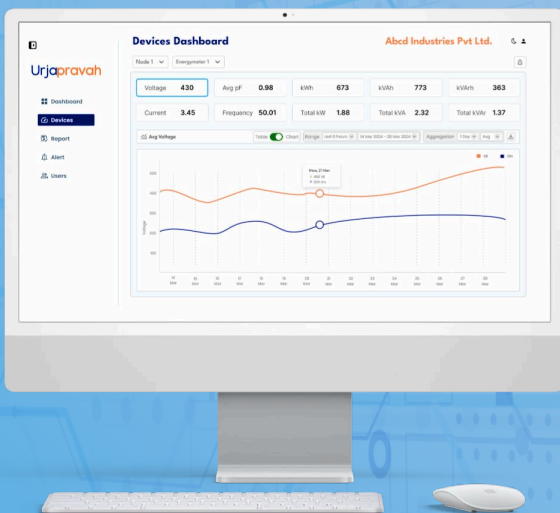
## 1. Dashboard

A real-time monitoring hub that provides a clear, intuitive view of energy parameters across devices and systems. Gain instant insights into voltage, current, and usage trends for smarter decisions.



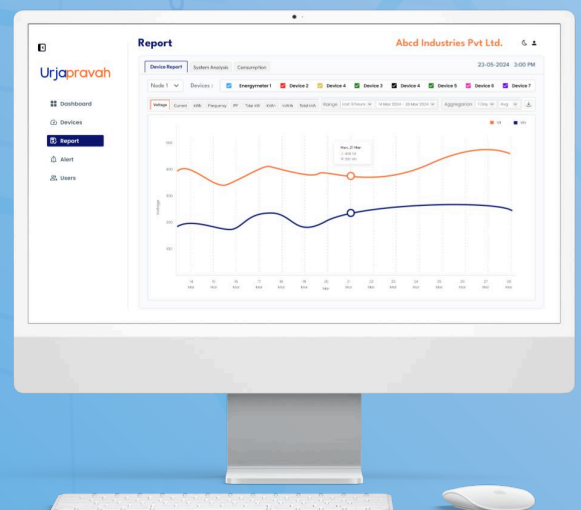
## 2. Devices

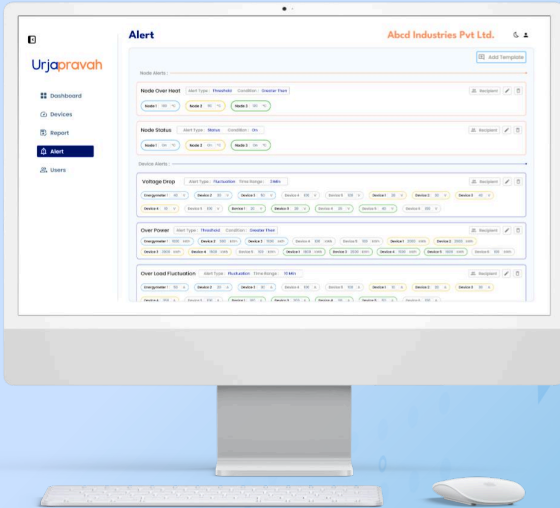
Effortlessly manage and monitor all connected devices across multiple lines and units. Ensure seamless operations and easy identification of energy usage across your infrastructure.



## 3. Reports

Generate comprehensive reports with detailed analytics and historical data. Identify energy trends, evaluate performance, and make informed, data-driven decisions for operational efficiency.



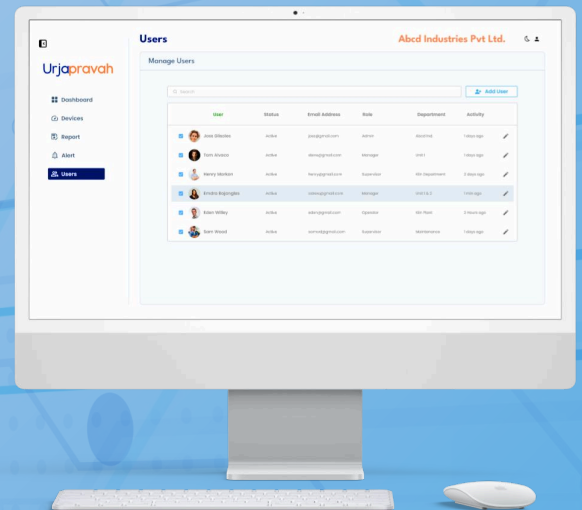


#### 4. Alerts

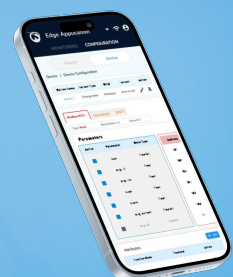
Stay ahead with instant notifications and alerts for abnormalities or potential system issues. Minimize downtime and ensure reliability with proactive monitoring.

#### 5. Users

A secure user management system to assign roles and permissions, ensuring safe and collaborative use of the platform across your team.



## Multiple Device Compatibility



---

## Key Characteristics

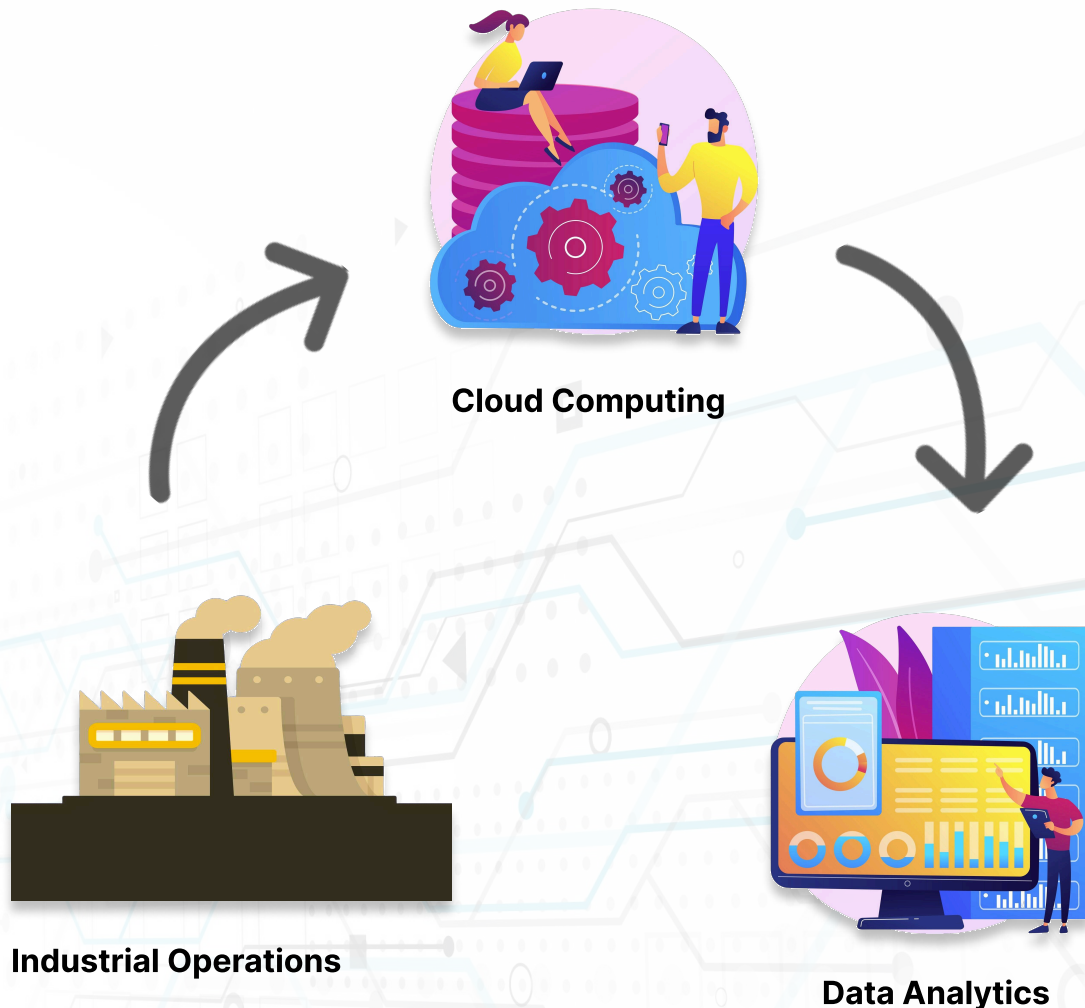
- **Real-time Monitoring:** Track energy usage across systems and processes in real-time for unparalleled visibility and control.
- **Advanced Dashboards:** Intuitive and customizable dashboards provide clear visualizations of energy patterns, trends, and KPIs.
- **Data Analytics:** Powerful analytics tools turn complex data into actionable insights, highlighting inefficiencies and opportunities for improvement.
- **Alerts and Notifications:** Receive early warnings about potential issues, ensuring quick responses to minimize downtime and improve system reliability.
- **Integration Ready:** Seamlessly integrates with existing industrial automation systems, making adoption hassle-free.

## Key Benefits

- **Reduced Operational Costs:** Optimize energy consumption and minimize waste, directly lowering utility expenses.
  - **Improved Equipment Lifespan:** Early detection of inefficiencies and potential issues reduces wear and tear, saving on maintenance and replacement costs.
  - **Increased Productivity:** Streamlined energy usage ensures consistent performance, minimizing downtime and maximizing output.
  - **Customizable Scalability:** Tailored solutions adapt to operations of any size, offering cost-effective scalability for growing industrial needs.
  - **Enhanced Profit Margins:** By lowering energy and operational costs, businesses can allocate resources to other profit-driving initiatives.
-



# IoTrope PathMapper



## Seamless Data Flow... From Industry to Insights

- **Industry Systems:** Data is generated from industrial equipment, including machines, PLCs, and sensors.
- **Edge Gateway:** The data is collected and pre-processed at the gateway, ensuring secure and efficient transmission.
- **Cloud Infrastructure:** Data is transmitted to the cloud, where it is stored, processed, and analyzed in real-time.
- **Monitoring Dashboard:** Insights are presented on an intuitive dashboard, offering actionable intelligence and performance tracking.
- **Decision Making:** Enables proactive decisions with visualized analytics, trends, and reports



# Why Choose us

At **IoTrope**, we don't just provide energy management solutions. We deliver a partnership built on trust, innovation, and proven results. Here's why industries rely on us:

- **Expertise in Industrial Automation**

With years of experience in industrial automation, we understand the unique challenges industries face and craft tailored solutions that seamlessly integrate with existing systems.

- **Comprehensive Solutions**

Our offerings encompass hardware design, firmware development, and cloud-based platforms, providing a complete energy management ecosystem under one roof.

- **IIoT-Driven Innovation**

We leverage cutting-edge IIoT technology to offer real-time monitoring, predictive analytics, and actionable insights, empowering industries to optimize energy consumption and reduce costs.

- **Proven Reliability**

IoTrope is trusted by industries for its dependable solutions, robust performance, and exceptional customer support. Our strong relationships with beta testers and clients demonstrate our commitment to quality.

- **Cost-Effective and Scalable**

Our solutions are designed to deliver significant cost savings while scaling effortlessly to meet the needs of businesses of all sizes.

- **Sustainability Focus**

We are committed to helping industries adopt sustainable practices by improving energy efficiency and reducing environmental impact

## Why IoTrope is the Perfect Partner for Your Industry ?

- **Efficiency:** Optimize energy use, cut waste, and save costs.
- **Productivity:** Real-time monitoring to reduce downtime.
- **Competitiveness:** Stay ahead with advanced IIoT technology.
- **Sustainability:** Meet standards and minimize environmental impact.
- **Tailored Solutions:** Designed for your unique industrial needs.

IoTrope – your partner in driving innovation and industrial success.

The logo for IoTropo features a stylized 'I' in orange, followed by a circular icon containing a blue antenna-like symbol, and the word 'Tropo' in orange. The background is a light gray circuit board pattern.

# IoTropo



+91 7203040008



[info@iotrope.com](mailto:info@iotrope.com)



[iotrope.com](http://iotrope.com)



542, RK World Tower, Near Shital Park, 150 ft Ring Road, Rajkot - 360006