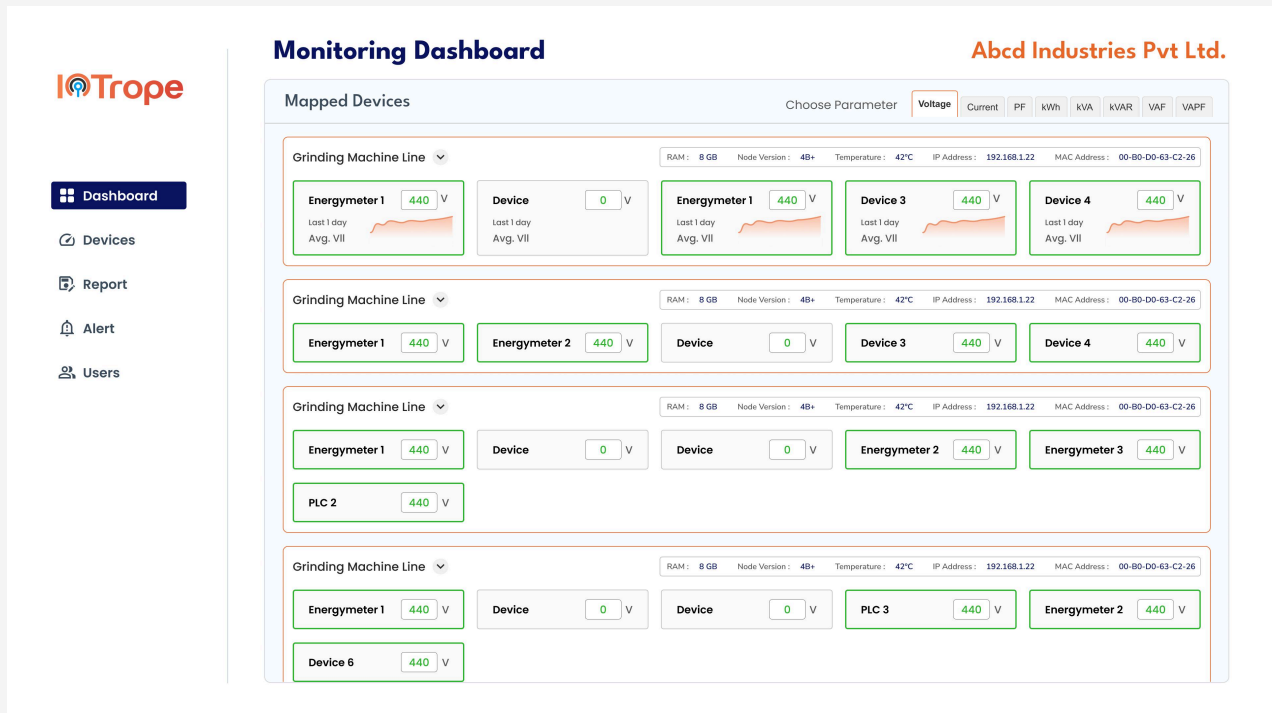


IoTrope



The Pulse of Smart Innovation

Monitoring Dashboard

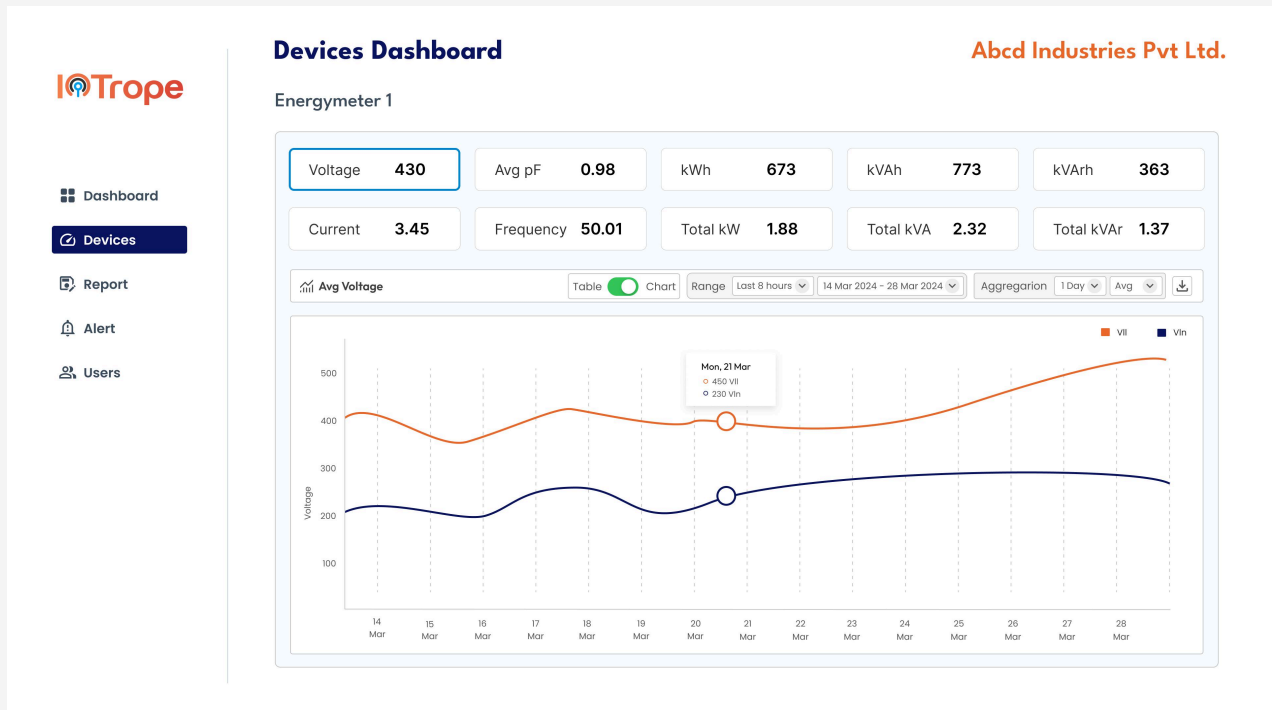


The **Monitoring Dashboard** of **IoTrope** provides real-time insights into energy parameters across different machine lines. It displays mapped devices with live voltage readings, trend analysis, and essential system details like RAM, temperature, and IP address.

Key features include:

- **Left-side navigation** for quick access to Devices, Reports, Alerts, and Users.
- **Parameter selection** (Voltage, Current, PF, kWh, etc.) for customized monitoring.
- **Graphical insights** for last 1-day trends to detect anomalies.
- **Color-coded indicators** for quick identification of normal and abnormal conditions.
- **Scalability & modular design** for easy expansion in industrial setups.

This dashboard helps industries optimize energy usage, enhance efficiency, and prevent downtime with a centralized, **user-friendly interface**.



The **Devices Dashboard** in **IoTrope** provides real-time monitoring of individual energy meters, offering key electrical parameters for in-depth analysis.

Key features include:

- **Live metrics** such as voltage, current, power factor, frequency, kWh, kVA, and kVAr.
- Toggle between **Table and Chart** views for flexible data visualization.
- **Historical trend graph** displaying voltage variations over a selected date range.
- **Adjustable aggregation settings** (hourly, daily, or custom range) for detailed analysis.
- **Export option** to download reports for further evaluation.

This dashboard enables industries to track device performance, detect anomalies, and **Optimize energy consumption efficiently.**

Report



The **Report Dashboard** in **IoTrope** provides comprehensive analytics on energy consumption and system performance.

Key features include:

- **Multiple report types:** Device reports, system analysis, and consumption trends.
- **Customizable data filters:** Select specific devices, parameters (kWh, kVA, PF, etc.), and date ranges.
- **Interactive bar chart** visualizing total kVA trends over time.
- **Multi-device comparison** to track performance variations across different units.
- **Aggregation controls** for hourly, daily, or custom interval analysis.
- **Export options** for documentation and further insights.

This dashboard enables data-driven decision-making for energy optimization and operational efficiency.

The screenshot shows the IoTrope Alert Dashboard for Abcd Industries Pvt Ltd. The dashboard is titled 'Alert' and features a 'Manage Rules' section. On the left, there is a navigation menu with 'Alert' selected. The main area displays several alert rules:

- Node Over Heat:** Alert Type: Threshold, Condition: Greater Than. Devices: Node 1 (100 °C), Node 2 (110 °C), Node 3 (120 °C).
- Node Status:** Alert Type: Status, Condition: On. Devices: Node 1 (On °C), Node 2 (On °C), Node 3 (On °C).
- Voltage Drop:** Alert Type: Fluctuation, Time Range: 3 Min. Devices: Energymeter 1 (40 V), Device 2 (30 V), Device 3 (50 V), Device 4 (100 V), Device 5 (100 V), Device 1 (20 V), Device 2 (30 V), Device 3 (40 V), Device 4 (10 V), Device 5 (100 V), Device 1 (20 V), Device 3 (20 V), Device 4 (25 V), Device 5 (40 V), Device 6 (100 V).
- Over Power:** Alert Type: Threshold, Condition: Greater Than. Devices: Energymeter 1 (1000 kWh), Device 2 (500 kWh), Device 3 (1500 kWh), Device 4 (100 kWh), Device 5 (100 kWh), Device 1 (2000 kWh), Device 2 (2500 kWh), Device 3 (3000 kWh), Device 4 (1500 kWh), Device 5 (100 kWh), Device 1 (1800 kWh), Device 3 (2500 kWh), Device 4 (1500 kWh), Device 5 (1600 kWh), Device 6 (100 kWh).
- Over Load Fluctuation:** Alert Type: Fluctuation, Time Range: 10 Min. Devices: Energymeter 1 (50 A), Device 2 (20 A), Device 3 (30 A), Device 4 (100 A), Device 5 (100 A), Device 1 (10 A), Device 2 (20 A), Device 3 (30 A).

The **Alert Dashboard** in **IoTrope** provides real-time monitoring and customizable alerts for system efficiency and safety.

Key features include:

- **Custom rule-based alerts:** Threshold, fluctuation, and status-based alerts.
- **Multi-device applicability:** Configure alerts for specific nodes, devices, and parameters (voltage, power, load, etc.).
- **Time-based fluctuation alerts** to detect unstable conditions.
- **User-defined conditions** for setting alerts on overheating, power surges, voltage drops, and overload fluctuations.
- **Recipient-based notifications** to ensure quick response and issue resolution.
- **Easy rule management** with add, edit, and delete options for efficient monitoring.

This dashboard enables proactive issue detection, preventing equipment failures and **Optimizing energy usage**.

Users

The screenshot displays the 'Users' management interface. On the left, a sidebar contains navigation options: Dashboard, Devices, Report, Alert, and Users (highlighted). The main content area is titled 'Manage Users' and includes a search bar and an 'Add User' button. Below these is a table listing six users with their respective details.

User	Status	Email Address	Role	Department	Activity
<input checked="" type="checkbox"/> Joss Gilsoles	Active	joss@gmail.com	Admin	Abcd Ind.	1 days ago
<input checked="" type="checkbox"/> Tom Alvaco	Active	steve@gmail.com	Manager	Unit 1	1 days ago
<input checked="" type="checkbox"/> Henry Markon	Active	henry@gmail.com	Supervisor	Klin Department	2 days ago
<input checked="" type="checkbox"/> Emdra Bojangles	Active	adrew@gmail.com	Manager	Unit 1 & 2	1 min ago
<input checked="" type="checkbox"/> Eden Willey	Active	eden@gmail.com	Operator	Klin Plant	2 Hours ago
<input checked="" type="checkbox"/> Sam Wood	Active	samwd@gmail.com	Supervisor	Maintenance	1 days ago

The **User Management Dashboard** in **IOTrope** provides efficient control over user access and roles.

Key features include:

- **Role-based access control (RBAC)** to assign permissions (Admin, Operator, Viewer, etc.).
- **User creation, editing, and deactivation** for streamlined management.
- **Activity logs and audit trails** for tracking user actions.
- **Multi-user support** for collaborative monitoring and management.
- **Secure authentication** to prevent unauthorized access.

This dashboard ensures efficient team collaboration, secure access control, and accountability in system operations.

Partner with us to drive sustainability, enhance productivity, and stay ahead with cutting-edge technology. Join now and transform the way you manage energy!